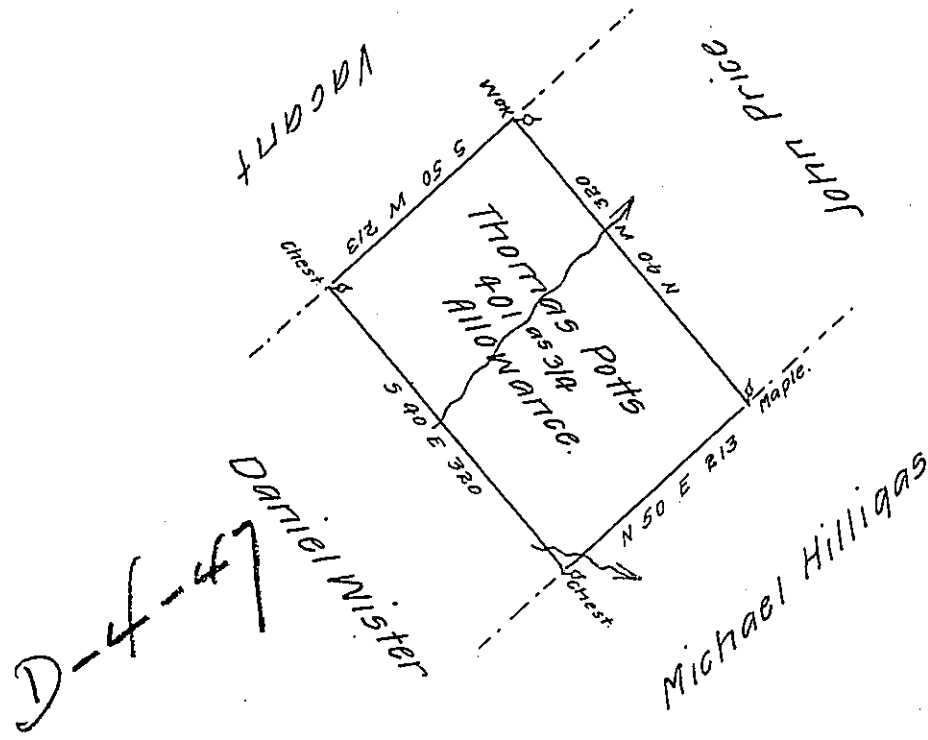


C-182-92
101



Situate on the waters of Mask Creek & Bald Eagle in Bald Eagle township in the County of Mifflin Survey'd on the 4 day of April 1794 for Thomas Potts by virtue of his warrant bearing date on the 27 day of December 1792 containing four hundred one acre $\frac{3}{4}$ & the usual all. taken from the field notes of Jos. J. Wallis dec'd

Dani^l Smith D.S.

To Daniel Brodhead Esqr
Surveyor General.

IN TESTIMONY that the above is a copy of the original remaining on file in the Department of Internal Affairs of Pennsylvania, made conformably to an Act of Assembly approved the 16th day of February, 1833, I have hereunto set my Hand and caused the Seal of said Department to be affixed at Harrisburg, this seventeenth day of March 1908.

Henry Houder
Secretary of Internal Affairs.